

NO ONE PROTECTS YOUR BOAT LIKE A
GUARDIAN



**CONSULTING.
DEVELOPMENT.
DESIGN.**

10,000+ RapidLaunch™ Controllers have been sold and installed all over the United States and abroad with satisfied and grateful boat owners. Guardian Boat Lifts engineer and design solutions perfectly align with your boat type, dock application and/or waterfront environment. Our engineers dedicate themselves to understanding your unique surroundings and situations, and apply detailed analysis to create a boat lift and controller tailored to your water needs.

Our leadership team are experts as well as end-users themselves. Guardian Boat Lifts encompasses engineers and technicians offering a complementary skill set that incorporates areas of expertise in manufacturing, electrical engineering and leadership.



WHAT DO YOU GET WITH A RAPIDLAUNCH CONTROLLER?

Each RapidLaunch™ Controller offers a 3 Year Limited Warranty, is made in the USA, and includes a simple, easy to read button system. When you have your controller installed, you will receive a complete manual that includes all the instructions you'll need. It is equipped as a plug and play with exhaust hose, mounting brackets, and rust-free hardware.

BL 100 <i>Push Button</i> For Mounted Dock Lifts	BL 200 <i>Remote Control</i> For Mounted Dock Lifts
BL 300 <i>Fully Automatic</i> For Mounted Dock Lifts	VIKING SERIES <i>Patent Pending</i> For Free Floating Lifts



info@guardianboatlifts.com
601 White Lane | LaFollette, TN 37766
1-800-343-0550 | GUARDIANBOATLIFTS.COM





THE FREE-FLOATING LIFT COMES WITH:

RapidLaunch™



VIKING SERIES

For Free-Floating Lifts

- 4 valve automatic controller that raises and lowers the boat
- Rated for Fresh and Salt water applications
- Fits any hydro pneumatic Free-Floating lift system from 4,000 to 25,000 lb. boats
- Pedestal mounted controller attached to lift (not on the dock)



DESIGNED
MANUFACTURED
& SUPPORTED



FREE-FLOATING LIFTS

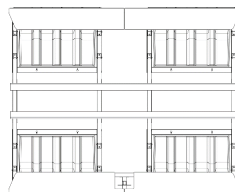
(4,000lbs to 25,000lbs)

This boat lift is designed for salt, brackish or freshwater and is free-floating, allowing it to be versatile and movable. The Guardian Boat Lift is a “level lifting” structure using advanced accelerometers. This Free-Floating lift can be tied to a boat dock or a standard mooring structure. The design is a marine grade, aluminum frame with stainless steel hardware, and polyethylene tanks.

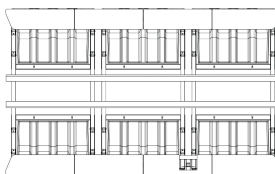
These lifts can be adapted at any time to fit a larger and/or smaller boat if desired. The Free-Floating lift is well-suited and can be placed on a stationary or floating dock system. This lift will effortlessly fit into a double slip, L or U-shaped slip and, most any square dock configuration.

PRODUCT SPECIFICATIONS

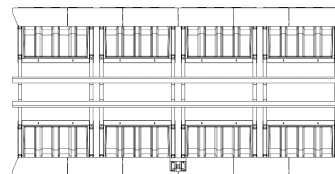
Model	Capacity	Tanks	Length	Outside Width	Inside Width	Bunk Rails	Water Depth (Minimum)	
6000-420	6000 Lbs 2722kg	4	14' / 4.27m	10' / 3.05m	7' 4" / 2.24m	2 - 2.75" x 8" x 14' Aluminum	23" / 0.58m + Draft	
				11' / 3.35m	8' 4" / 2.54m	2 - 2.75" x 8" x 14' Aluminum	23" / 0.58m + Draft	
				12' / 3.66m	9' 4" / 2.84m	2 - 2.75" x 8" x 14' Aluminum	23" / 0.58m + Draft	
8000-427	8000 Lbs 3629kg	4	18' / 5.49m	10' / 3.05m	7' 4" / 2.24m	2 - 2.75" x 8" x 18' Aluminum	30" / 0.76m + Draft	
				11' / 3.35m	8' 4" / 2.54m	2 - 2.75" x 8" x 18' Aluminum	30" / 0.76m + Draft	
9000-620	9000 Lbs 4082kg	6	18' / 5.49m	11' / 3.35m	8' 4" / 2.54m	2 - 2.75" x 8" x 18' Aluminum	23" / 0.58m + Draft	
				12' / 3.66m	9' 4" / 2.84m	2 - 2.75" x 8" x 18' Aluminum	23" / 0.58m + Draft	
				13' / 3.96	10' 4" / 3.15m	2 - 2.75" x 8" x 18' Aluminum	23" / 0.58m + Draft	
12000-627	12000 Lbs 5443kg	6	18' / 5.49m	11' / 3.35m	8' 4" / 2.54m	2 - 2.75" x 8" x 18' Aluminum	23" / 0.58m + Draft	
				12' / 3.66m	9' 4" / 2.84m	2 - 2.75" x 8" x 18' Aluminum	30" / 0.76m + Draft	
				13' / 3.96	10' 4" / 3.15m	2 - 2.75" x 8" x 18' Aluminum	30" / 0.76m + Draft	
12000-820	12000 Lbs 5443kg	8	24' / 7.32m	11' / 3.35m	8' 4" / 2.54m	2 - 2.75" x 8" x 14' Aluminum	23" / 0.58m + Draft	
				12' / 3.66m	9' 4" / 2.84m	2 - 2.75" x 8" x 14' Aluminum	23" / 0.58m + Draft	
				13' / 3.96m	10' 4" / 3.15m	2 - 2.75" x 8" x 14' Aluminum	23" / 0.58m + Draft	
				14' / 4.27m	11' 4" / 3.45m	2 - 2.75" x 8" x 14' Aluminum	23" / 0.58m + Draft	
				15' / 4.57m	12' 4" / 3.76m	2 - 2.75" x 8" x 14' Aluminum	23" / 0.58m + Draft	
16000-827	16000 Lbs 7257kg	8	24' / 7.32m	11' / 3.35m	8' 4" / 2.54m	2 - 2.75" x 8" x 14' Aluminum	23" / 0.58m + Draft	
				(Up to 25,000 lbs./9525kg)	12' / 3.66m	9' 4" / 2.84m	2 - 2.75" x 8" x 14' Aluminum	30" / 0.76m + Draft
				13' / 3.96m	10' 4" / 3.15m	2 - 2.75" x 8" x 14' Aluminum	30" / 0.76m + Draft	
				14' / 4.27m	11' 4" / 3.45m	2 - 2.75" x 8" x 14' Aluminum	30" / 0.76m + Draft	
				15' / 4.57m	12' 4" / 3.76m	2 - 2.75" x 8" x 14' Aluminum	30" / 0.76m + Draft	
				16' / 4.88m	13' 4" / 4.06m	2 - 2.75" x 8" x 14' Aluminum	30" / 0.76m + Draft	
20000-1027	20000 Lbs 9072kg	10	30' / 9.14m	11' / 3.35m	8' 4" / 2.54m	2 - 2.75" x 8" x 20' Aluminum	30" / 0.76m + Draft	
				(Up to 25,000+ lbs./11340kg)	12' / 3.66m	9' 4" / 2.84m	2 - 2.75" x 8" x 20' Aluminum	30" / 0.76m + Draft
				Call for Details	13' / 3.96m	10' 4" / 3.15m	2 - 2.75" x 8" x 20' Aluminum	30" / 0.76m + Draft
				14' / 4.27m	11' 4" / 3.45m	2 - 2.75" x 8" x 20' Aluminum	30" / 0.76m + Draft	
				15' / 4.57m	12' 4" / 3.76m	2 - 2.75" x 8" x 20' Aluminum	30" / 0.76m + Draft	
				16' / 4.88m	13' 4" / 4.06m	2 - 2.75" x 8" x 20' Aluminum	30" / 0.76m + Draft	
				2 - 2.75" x 8" x 10' Aluminum	30" / 0.76m + Draft			



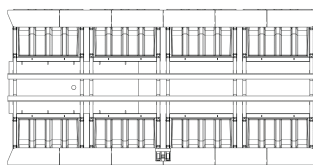
6,000-8,000 LBS.



9,000-12,000 LBS.

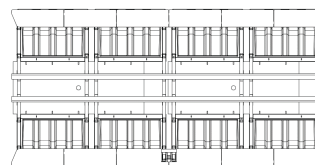


12,000-16,000 LBS.



UP TO 21,000 LBS.

Single Aux



UP TO 25,000 LBS.

Double Aux

CONFIGURED FOR NEARLY ALL BOAT DESIGNS

Including:

- Inboard Boats
- Outboard Boats
- I/O Boats
- Pontoon Boats